



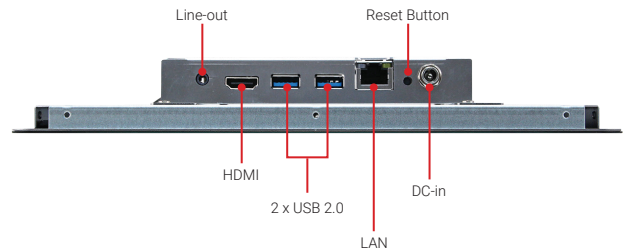
# OFT-10WR2

10.1" Open Frame Tablet, Rockchip RK3568 ARM Quad-core Cortex-A55 CPU Onboard



## Features

- 10.1" 800 x 1280 Open Frame Table with PCAP touch
- Rockchip RK3568 ARM Quad-core Cortex-A55 CPU onboard, up to 2.0GHz
- 2GB DDR4 Onboard
- 32GB eMMC
- Fanless operation from 0°C ~ 40°C
- DC 12V~24V
- 1 x HDMI 1.4 Out, 2 x USB 3.0 Type A, 1 x LAN port, 1 x Headphone Jack
- 1 x M.2 3042 B-Key for Wi-Fi/BT module
- 1 x microSD card slot
- Supports Android 11, Debian 11

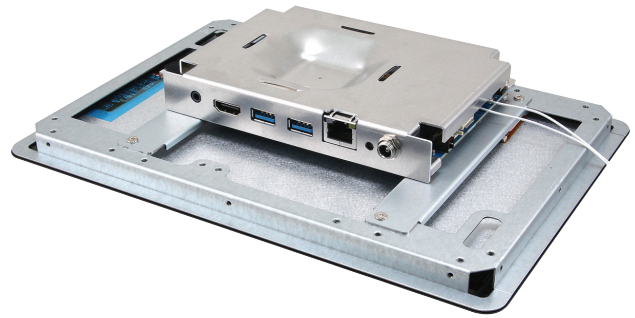
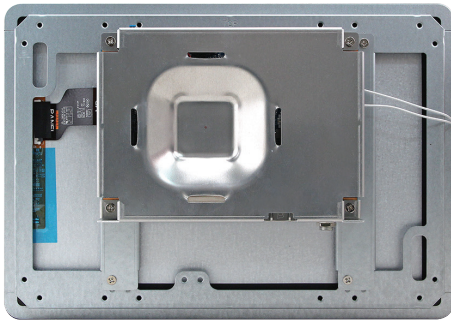


## SPECIFICATIONS

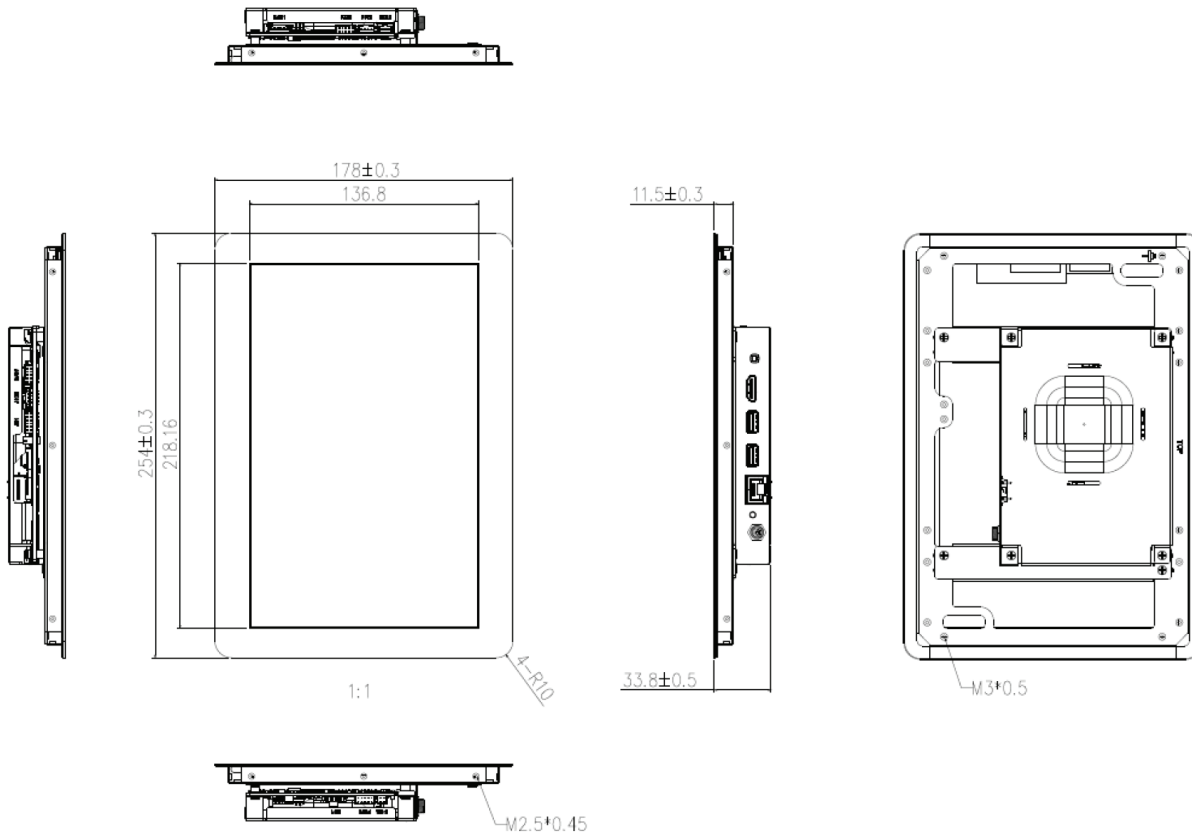
System	
CPU	Rockchip RK3568 ARM Quad-core Cortex-A55, up to 2.0GHz with integrated Mali-G52 GPU and 1TOPS NPU
System Memory	2GB DDR4 Onboard
M.2 Socket	1 x M.2 B-Key (3042) socket for SATA SSD/LTE Card
Storage	32GB eMMC
Panel Display	
LCD Size	10.1"
Resolution	800 x 1280
Touch Type	PCAP
Touch Controller	ILI 2511
Touch Screen	ST-101C34B_V02 (USB interface)
Wireless Communication	
Bluetooth	Optional BT 5.0
WLAN	Optional Wi-Fi 802.11ac/a/b/g/n
Supported OS	
Linux	Android 11 / Debian 11
External I/O	
Display	1 x HDMI 1.4 Out
USB	2 x USB 3.0 Type A
LAN	1 x RJ45
Audio	1 x Headphone Jack
microSD	1 x microSD Card Slot
DC-in	1 x DC-in
Reset Button	1 x Reset

Internal I/O	
Display	1 x MIPI DSI
USB	1 x USB CAM DMIC Interface 1 x USB Touch interface
COM Port	2 x RS232, and 1 x RS485
Audio	1 x Mic-in, 1 x Speaker
GPIO	1 x 16-bit GPIO
MIO	1 x Touch Button connector, 1 x DC Input, 1 x I2C Sensor Interface, 1 x RTC battery, 1 x Touch Button
Mechanical, Power, and Environment	
Power Requirement	DC Input 12 ~ 24V
Operating Temp	0°C ~ 40°C (32°F ~ 104°F)
Storage Temp	-20°C ~ 60°C (-4°F ~ 140°F)
Operating Humidity	40°C @ 95% Relative Humidity, Non-condensing
Certification Information	CE, FCC Class A
Product Dimension	10" x 7" x 1.29" (254x178x32.8mm)
Product Weight	1.54 lbs (0.7 kg)
Dimension	10" x 7.01" x 1.33" (254 x 178 x 33.8 mm)
Weight	1.54 lbs (0.7KG)

## SPECIFICATIONS / ADDITIONAL PRODUCT PHOTOS



## DIMENSIONS



## ORDERING INFORMATION

Model Name	Description	OS	Part Number
OFT-10WR2	10.1" OFT, Rockchip RK3568 CPU onboard	Linux	OFT-10WR2-6803-A1R
Power Cord/ Adapter	Not included, please contact <a href="mailto:BCMSales@bcmcom.com">BCMSales@bcmcom.com</a> for more information.		



### BCM Advanced Research

Tailored Hardware Solutions, Delivered with Excellence:  
Your Go-To Partner for Industrial Computing Design



[BCMSales@bcmcom.com](mailto:BCMSales@bcmcom.com)  
[www.bcmcom.com](http://www.bcmcom.com)



11 Chrysler  
Irvine, CA 92618 USA

intel  
prestige  
partner  
Builder