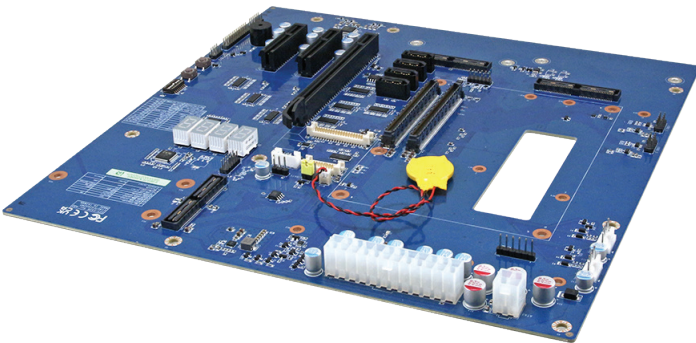




EEV-EX26

Micro ATX Carrier Board Supports COM Express Type 6
PICMG® COM Express® Revision 3.1

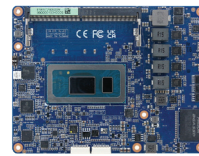


EEV-EX26 without IET Modules

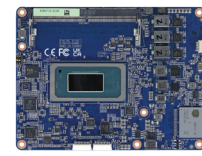
Features

- Micro ATX form factor
- Supports COM Express Type 6 modules PICMG® COM Express® Revision 3.1
- IET modules available for additional DP/HDMI/VGA, 2.5G LAN, USB3.2 Gen2 x1, USB4 Type C, SD/DIO
- 1 x PCIe Gen4 x16, 2 x PCIe Gen4 x4

Compatible COMe Module



ESM-RPL



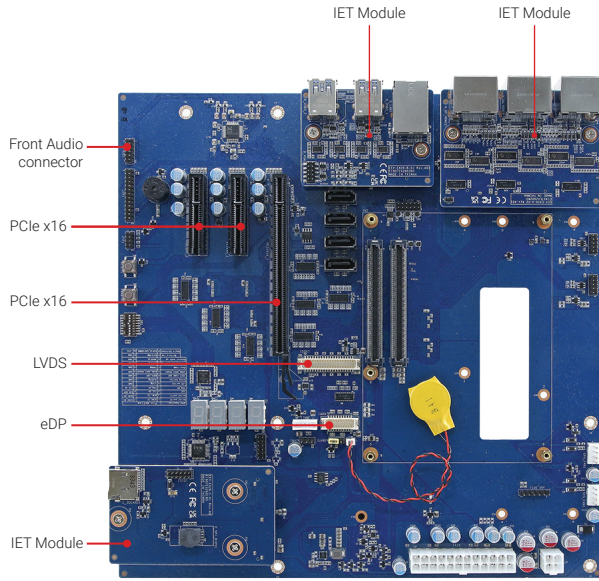
ESM-ARL

SPECIFICATIONS

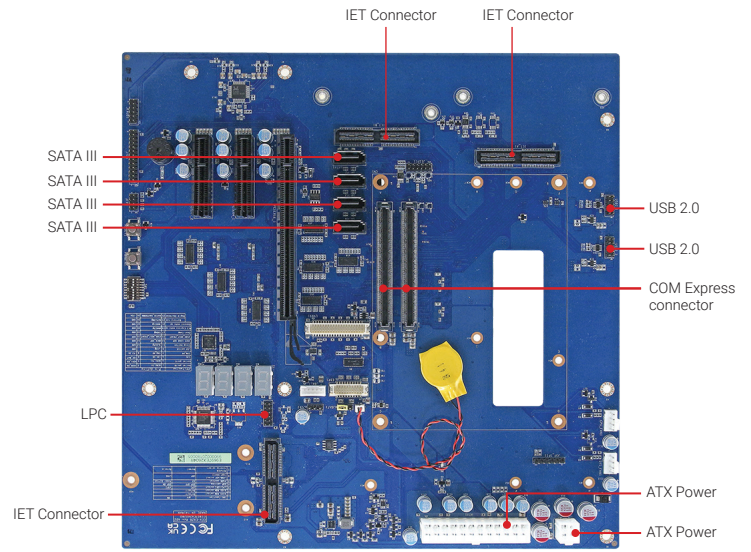
I/O	
Expansion	1 x PCIe Gen4 x16 2 x PCIe Gen4 x4
Display	1 x eDP/1 x LVDS Additional DP/HDMI/VGA through IET module
USB	2 x USB 2.0 Additional USB through IET module
SATA	4 x SATA III
Power Input	1 x 2 x 12-pin ATX power connector 1 x 2 x 2-pin ATX 12V power connector
IET	IET Connectos for DP/HDMI/VGA/USB/LAN modules
IET Modules	
AUX-A01	2 x USB4 Type C 1 x HDMI
AUX-A02	3 x DDI configurable to DP 1.4a (max. 4096 x 2160@60Hz) or HDMI 2.0b (4096x2160@60Hz)
AUX-A03	3 x DisplayPorts
AUX-A04	3 x HDMI
AUX-B01	1 x VGA 1920 x 1200 @ 60Hz 2 x USB3 1 x VGA
AUX-C01	1 x SD Card Slit, 1 x GPIO

Mechanical, Power, and Environment	
Power Requirement	+12V/+5V/5VSB/+3.3V/-12V
Operating Temperature	-40 ~ 85°C (-40 ~ 185°F)
Storage Temperature	-40 ~ 75°C (-40 ~ 167°F)
Operating Humidity	40°C @ 95% Relative Humidity, Non-condensing
Form Factor	Micro ATX (uATX)
Dimensions (L) x (W)	9.6" x 9.6" (243.84mm x 243.84mm)
Weight	0.91lbs (0.412kg)
Certification Information	CE, FCC, RoHS Compliant

SPECIFICATIONS / ADDITIONAL PRODUCT PHOTOS



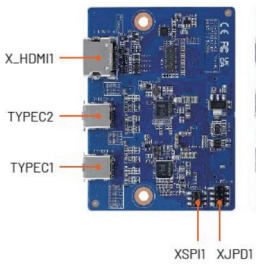
EEV-EX26 with 3 IET Modules installed



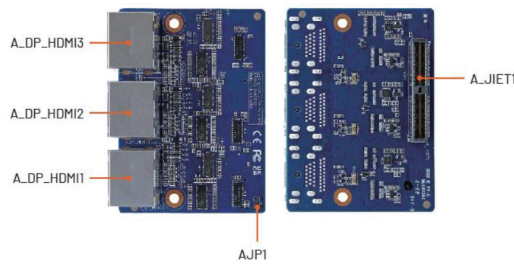
EEV-EX26 without IET Modules

IET Modules

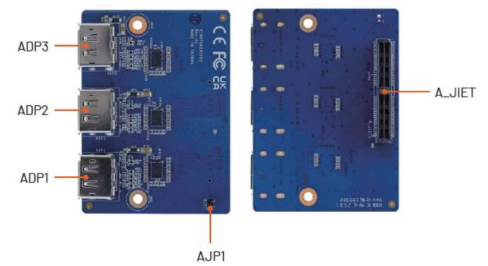
AUX-A01



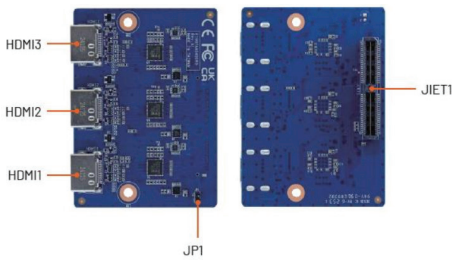
AUX-A02



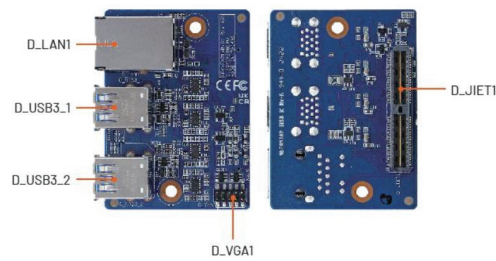
AUX-A03



AUX-A04



AUX-B01



AUX-C01



ORDERING INFORMATION

Model Name	Description
EEV-EX26-A1R	Type 6 Micro ATX Ev. Board for COM Express Rev.3.0 A1



BCM Advanced Research

Tailored Hardware Solutions, Delivered with Excellence:
Your Go-To Partner for Industrial Computing Design



BCMSales@bcmcom.com
www.bcmcom.com



11 Chrysler
Irvine, CA 92618 USA