

### Features

- Intel® Atom™ x5-Z8350 Processor: 2M Cache, up to 1.92 GHz
- 2GB / 4GB RAM, 32GB / 64G eMMC
- PCAP Touch
- 10/100/1000 Ethernet (PXE Boot)
- Touch button (Power/ Brightness/ Volume/ LED)
- RS232 or RS422 or RS485
- DC 12~24V Input or Powered LAN 802.3AT
- NFC Reader, Smart Card Reader, AMIC
- 2.0MP Camera, Speak 4Ω 2.0W/2.5W(MAX)
- LED Indicating Light Bar (Light color: Green and Red, Illuminating area: 70\*8mm(front),70\*5mm(side))
- 75 x 75mm VESA Mount
- Antibacterial Plastic
- Optional Handset



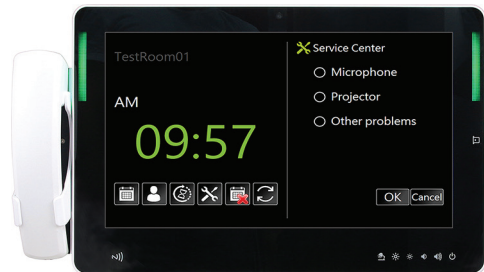
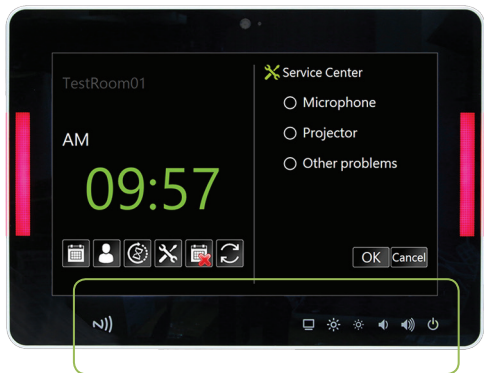
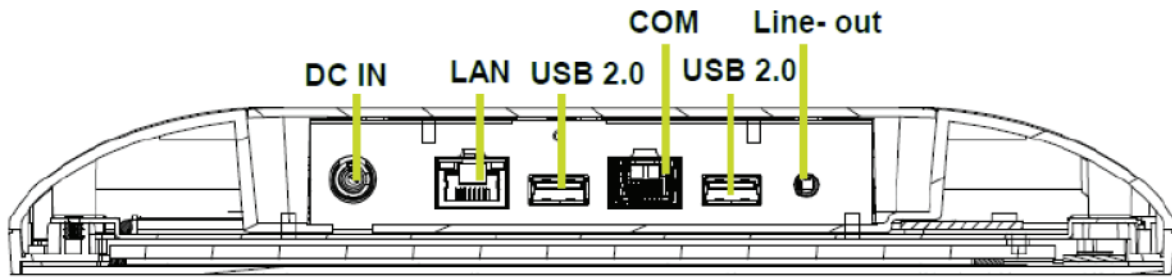
### Specifications

System	
CPU	Intel® Atom™ x5-Z8350: 2M Cache, up to 1.92 GHz
System Chipset	Intel x5-Z8350
System Memory	2GB / 4GB DDR3L RAM
Wireless Communication	802.11 b/g/n
Storage	32GB eMMC / 64GB eMMC
OS Information	Windows 10 IoT (64 bit) Android 5.1(64 bit) Ubuntu 19.04 (64bit)
Panel	
LCD Size	15.6"
Resolution	1920x1080
Luminance	220 cd/m2
Viewing angle	178° (H/V)
Touch Type	PCAP
Display	
Resolution	LVDS: Max. resolution 1920x1280 @ 60Hz
Multiple Display	Windows support extended mode
Data Collection	
Camera	2M pixel
NFC	NFC Reader
Audio	
Speaker Output	4Ω 2.0W/2.5W(MAX)
Ethernet	
Chipset	Realtek RTL8111H(S)-CG
LAN Port	1 x RJ45

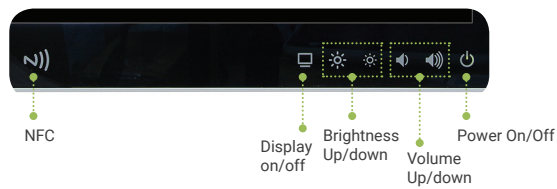
I/O	
USB	2 x USB 2.0
Camera	2.0MP Camera
External I/O Connector	1 x RJ45 for RS232 or RS422 or RS485 2 x USB 2.0 Type A 1 x 10/100/1000 Ethernet 1 x 4-Pin 3.5mm Audio Jack
Internal I/O Connector	1 x Touch Button interface 1 x eDP & Dual channel 24bit LVDS 1 x I2C interface for PCAP 5 x USB interface for PCAP, Camera and others 1 x Micro USB2.0 client (reserved) 1 x Micro SD connector 2 x LED Bar interface 1 x AMIC
Camera	2.0MP Camera
Power Requirement	
Power Requirement	DC Input, 12~24V
Power Type	DC Jack
Adapter	Input: 100~240 Vac/50~60 Hz Output: 60W Adapter (12V @ 5A Adapter)
Mechanical and Environment	
Operating Temp	0°C ~ 40°C (32°F ~ 104°F)
Storage Temp	-10°C ~ 60°C (14°F ~ 140°F)
Operating Humidity	0% ~ 90% Relative Humidity, Non-condensing
Weight	5.5 lbs/ 2.5 Kgs
Dimension	18.63" x 10.6" x 2.76" (472.1 x 269 x 70.1 mm)
Mounting	VESA 75x75mm
Certification	CE FCC Class B

### Ordering Info

VNS-15W01 15.6 inch Panel PC with Intel Atom Z8350 Processor



Front



Back

\* All product specifications and images are subject to change without notice. Last update: 2020/05/04



**BCM Advanced Research**

11 Chrysler, Irvine, CA 92618 USA  
An industry leader in industrial motherboards & embedded computing

[www.bcmcom.com](http://www.bcmcom.com)

BCMSales@bcmcom.com  
(949) 470-1888