

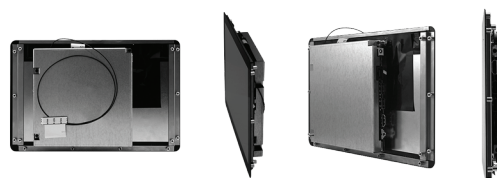
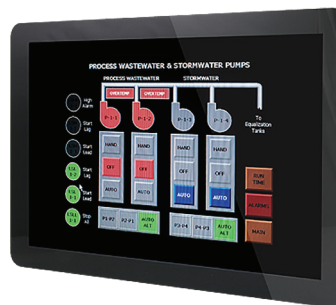
# OFT-07W01

Open Frame Tablet

7" Open Frame Tablet

## Features

- 7 inch Open Frame Tablet
- Intel Atom Z3735F Quad Core 1.33 GHz Processor
- 2GB DDR3L RAM
- 8GB or 32GB eMMC
- PCAP Touch
- 10/100 Ethernet (PXE Boot)
- Touch board interface (Power/ Brightness/ Volume/ LED)
- 16Bit programmable GPIO
- Wi-Fi (802.11b/g/n) & Bluetooth 4.0
- 12V - 24V DC Input
- 1 x RS232 and 1 x RS485 (Two Internal COM Ports)
- OEM Product - Please contact for more information



## Specifications

### System

CPU	Intel Atom Z3735F 1.33GHz Quad Core Processor
System Chipset	SoC
System Memory	2GB DDR3L RAM
Storage	8GB or 32GB eMMC
Wi-Fi	Wi-Fi (802.11b/g/n) & Bluetooth 4.0
Multiple Display	Windows/ Linux support extended mode Android support clone mode only

### OS Support

OS Info	Windows 8.1/ Windows 10, Android 4.4/ Ubuntu 14.04
---------	--

### Panel Display

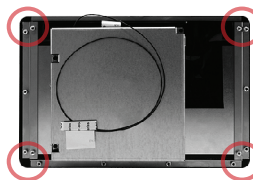
LCD Size	7"
Resolution	1280 x 800
Touch Type	PCAP

### External I/O

Audio	1 x Head Phone Jack
LAN	1 x 10/100 Ethernet
Display Interface	1 x HDMI
USB	2 x USB 2.0 1 x micro-USB Client (Android only)
Power Input	1 x DC Jack
SD	1 x Micro SD slot
COM	1 x RS232 and 1 x RS485 (Two Internal COM Ports)

### Mechanical & Environment

Power Requirement	12V - 24V DC input
Operating Temp.	0 ~ 40°C (32 ~ 104°F)
Storage Temp.	-10 ~ 60°C (-14° ~ 140°F)
Operating Humidity	0%~90% Relative Humidity, Non-condensing
Mounting	Mounting Brackets
Form Factor	Open Frame Tablet
Reliability	EMI Test: CE, FCC Class A, VCCI



Rear mounting with integrated bracket designed for easy installation with screws.

\* All product specifications and images are subject to change without notice.  
Last update: 1/4/2017