

SYSTEMIUM® MODEL 545 ATX MID-TOWER



The Systium® Model 545 is high quality, RoHs compliant ATX mid-tower with seven full-length expansion slots. This chassis' high quality metal outer enclosure gives the product a "Brand Name" look and feel, while providing emissions control for high performance processors. Featuring a 430W power supply and 120mm rear cooling fan ensures reliability and supreme cooling for high demand operations. CSA-UL, FCC-CE Certifications make this your perfect choice. Available with or without certifications.

- **Motherboards:** uATX, ATX
- **Power Supply:** 430W PSU– PFC, Auto Ranging
- **Drives: External** 3- 5.25", 2- 3.5"
- **Drives: Internal** 2- 3.5" Drive Bay
- **Add in Cards:** 7- Expansion Slots, Full height Full-Length
- **Cooling:** 1- Rear 120mm Fan
- **Front Panel:** Power switch (Optional:2 USB ports)
- **Front Panel Indicators:** Power, HDD status LEDs
- **Unit Dimensions:**

	<u>H</u>	<u>W</u>	<u>D</u>
<u>Weight</u> 25 lbs.	16" (422mm)	7.9" (201mm)	18.9" (480mm)
<u>w/packaging</u> 28 lbs.	24" (406mm)	13" (590.5mm)	24" (552mm)

Finish

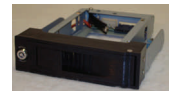
Beige
54514-01R

Black
54515-01R

Options:

Extra USB ports
Heat Sinks

SATA Quick Swap Drives



- **Certification** FCC Class B, CSA and CE approvals are available when the unit is integrated according to the Model 545 Assembly Guide included with the product. 545xx-01R
- **Approved Motherboards:** BCM®, ITOX®, Intel®, RadiSys®
For a complete list of system engineered and agency approved motherboards please visit our website.

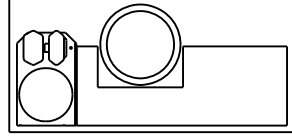
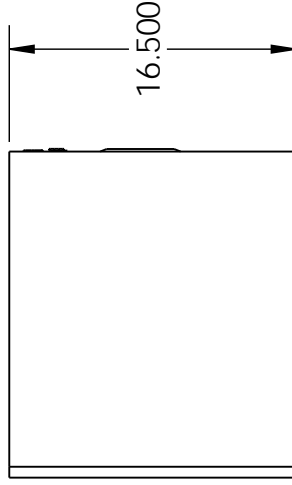
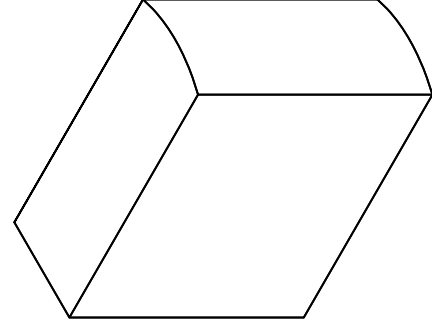
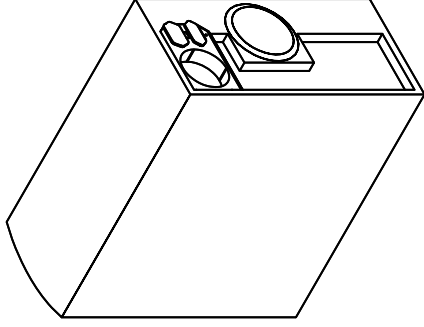
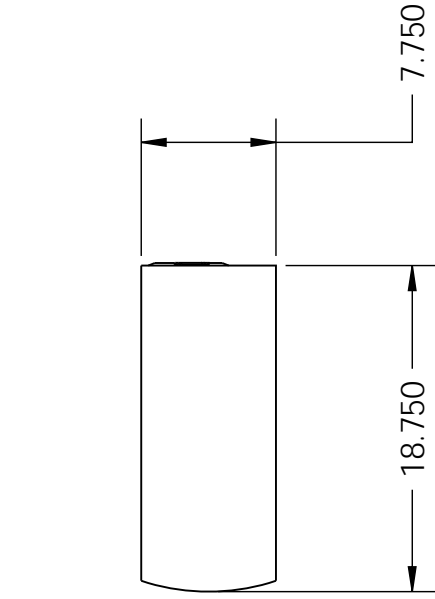
SYSTIUM® Technologies
MotherBoard Ready™ Solutions

4301 QUEBEC AVENUE NORTH, UNIT 1, NEW HOPE, MN 55428

Please contact your local Systium
Distributor for more information.
See www.systium.com

(763) 537-3600

Fax (763) 537-3625



DRAWN	NAME DSC	DATE 1/9/2008	System Technologies, LLC	
UNLESS OTHERWISE SPECIFIED:			TITLE: atx mid tower	
DIMENSIONS ARE IN INCHES TOLERANCES: ANGULAR: MACH ±1 BEND ±2 TWO PLACE DECIMAL ±.025 THREE PLACE DECIMAL ±.010			SIZE A	DWG. NO. 54500 spec sheet
MATERIAL HD Galv extra smooth FINISH			REV	SCALE: 1:1
WEIGHT:			SHEET 1 OF 1	

PROPRIETARY AND CONFIDENTIAL
 THE INFORMATION CONTAINED IN THIS DRAWING IS THE SOLE PROPERTY OF System Technologies, LLC. ANY REPRODUCTION IN PART OR AS A WHOLE WITHOUT THE WRITTEN PERMISSION OF System Technologies, LLC, IS PROHIBITED.